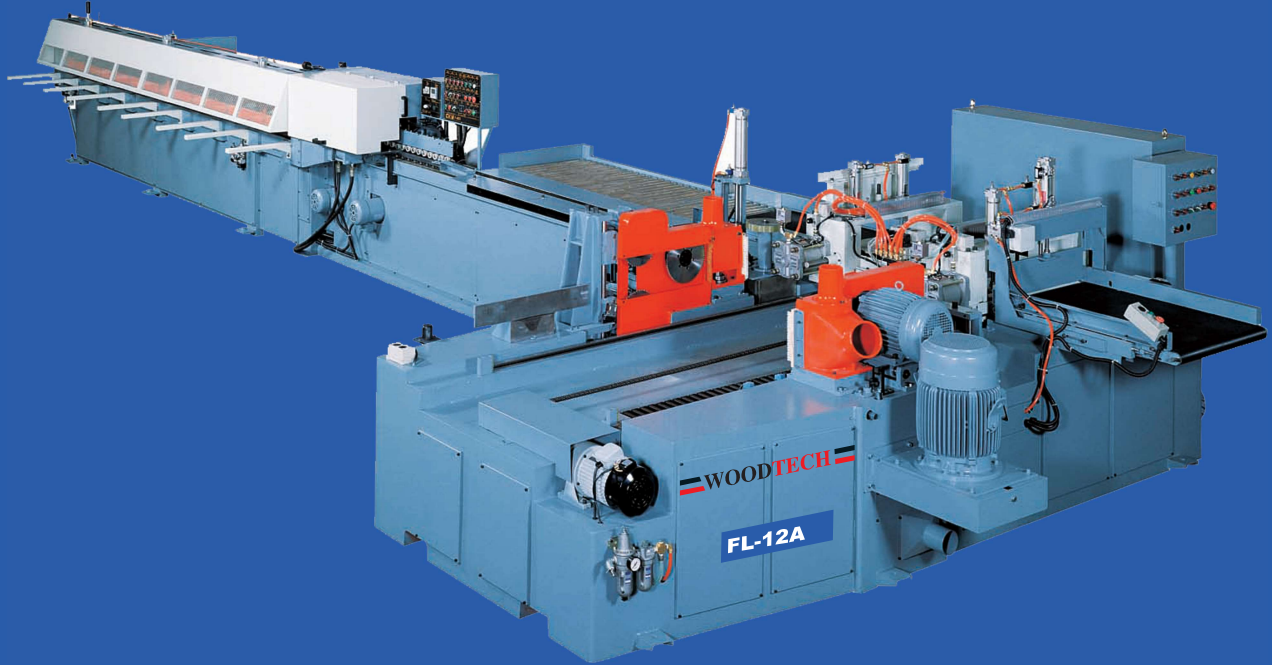


Solidwood Line
Made In Taiwan



FL-12A - AUTO FINGER JOINT LINE FL-12AF- FULLY AUTO FINGER JOINT LINE

STANDARD FEATURES

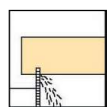
- Maximize Productivity !
- Designed with operation convenience and economy in mind !
- With new generation FL-12 Auto Finger Jointing Line, you can obtain a fully automatic production yet at an affordable price.
- Designed and engineered for high production and economy in mind, this new FL-12 is built with tradition of superior quality and performance.
- Minimum trouble for operations year after year. In addition, its compact construction will save your working space.
- The FL-12 also saves your labour cost greatly by requiring only one operator to attend the machine.
- The entire motion cycle from initial work piece infeed, right and left end shaping, jointing to final product out feed are fully automatic operated. Let us show you how the FL-12 creates profits for you.

FULLY AUTOMATIC PRODUCTION PROCESS

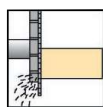
- Automatic initial infeeding of workpiece.
- Automatic feed table.
- F-C31 performs scoring trimming and shaping on right end of workpiece.
- Table moves from right to left side.
- F-C31 performs scoring trimming shaping and gluing on left end of workpiece.
- Work pieces feed directly onto F-D01 hand feeding table.
- Operator shifts work pieces onto the in feed conveyor of assemble press.
- Work pieces travel forward for cutting-to-length.
- Finger assembly is performed by a powerful hydraulic system.
- Final products out-feed on staying platform.

PRODUCTION FLOW CHART (FOR FL-12A/FL-12AF)

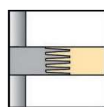
LEFT END



Scoring



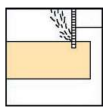
End trimming



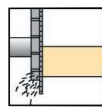
Shaping



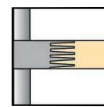
RIGHT END



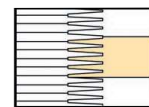
Scoring



End trimming

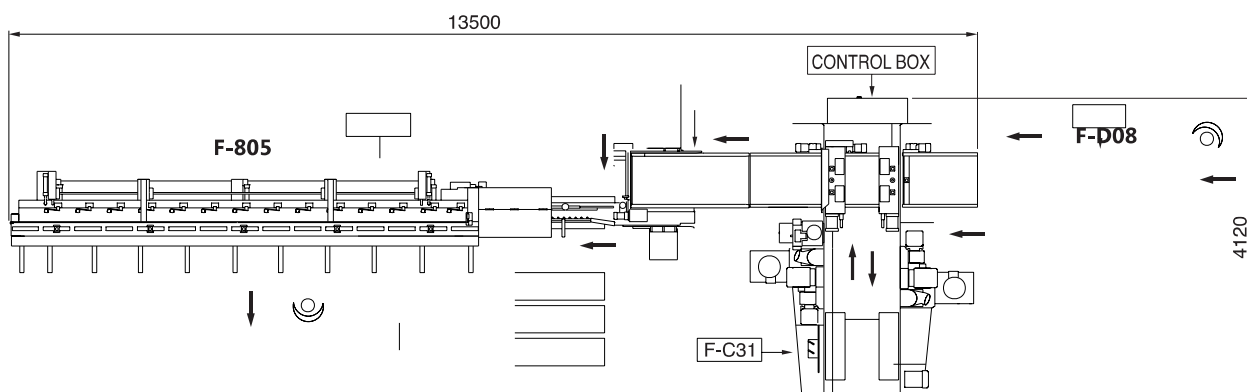


Shaping



Gluing

LAYOUT

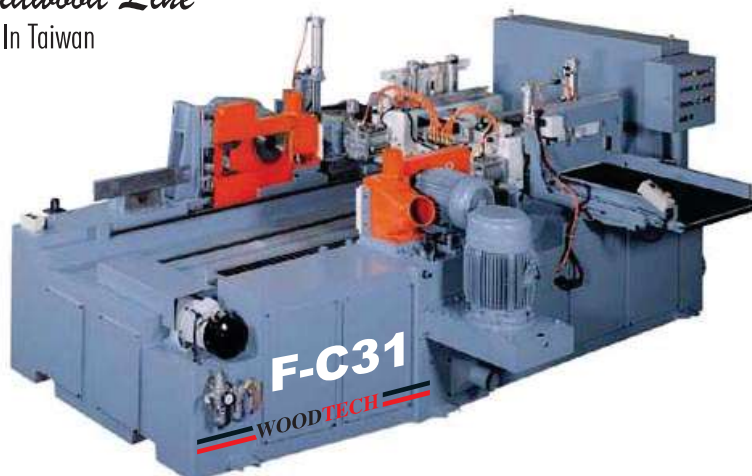


FL-12A PACKING:					
MODEL	QTY	Packing Dimension (LxWxH) mm	Machine Dimension (LxWxH) mm	N.W. (Kgs)	G.W. (Kgs)
F-A05-6	1	7670 x 1180 x 1820	8620 x 2050 x 1660	3,000	3,210
F-C31	1	4210 x 2300 x 1950	4210 x 3300 x 1950	3,662	3,847
F-A05 INFEED ASSY.	1	2330 x 760 x 1720		300	335
F-D06	1	1050 x 1210 x 1240	1110 x 9200 x 960	100	120
F-C31 MOTOR	1	1030 x 880		360	380
F-C31 CONVEYOR	1	1120 x 1060 x 470		118	140
F-C31 CONVEYOR	1	1240 x 1120 x 1050		170	200

FL-12AF PACKING:					
MODEL	QTY	Packing Dimension (LxWxH) mm	Machine Dimension (LxWxH) mm	N.W. (Kgs)	G.W. (Kgs)
F-A08-6	1	9300 x 1240 x 2200	9230 x 2050 x 1430	3501	3889
F-D01	1	2670 x 2300 x 1700	2810 x 1950 x 1600	940	1072
F-C31	1	4180 x 2300 x 1900	4210 x 3300 x 1950	3780	4110
F-C31 MOTOR+CONVEYER	1	2300 x 1670 x 2100		786	842

Solidwood Line

Made In Taiwan



F-C31 FINGER SHAPER (For FL12A / FL12AF)

Table Width	650mm
Working Size	
Length	150~1000mm
Width	20~75mm
Thickness	20~150mm
POWER REQUIRED	
Inverter Control For Moving The Working Table	3P / 2HP x 1
Conveyor Motor	3P / 1/2HP x 3
Scoring Saw Motor	3P / 2HP x 3
Trim Saw Motor	3P / 7.5HP x 2
Shaper Cutter Motor	3P / 20HP x 2
With Roller Type Glue System	
With Saw Blade	
With 20 Pieces of Finger Cutter (160mm X 70mm X 4mm X 2t)	
Voltage	415V/50C/3P

Features

1. Two shapers, left and right side, are on the same body.
2. Only has one working table to do the two sides, left and right.
3. Scoring saw unit up and down system needs to use rods and bearings
4. Trimming saw unit in and our system needs to use rods and bearings
5. One servo motor to control the working table to move left and right
6. Use servo motor to control the push plate to push the material in to the working table.
7. Air consumption: 295 L/min

F-D08 ROLLER FEEDING TABLE (For FL12A)

Auto feeding table	650 mm x 1000
Range of material length	150-1000 mm
Range of material width	30-160 mm

*All specifications, dimensions and design characteristics are subject to change without prior notice.



F-D01-12 (For FL-12AF)

AUTOMATIC ROLLING TABLE

Table working Size(LxW)	1000mm x 650mm
Feed Drive Motor	1HP / 3P
Out Feed Drive Motor	2HP / 3P
Brush Roller Drive Motor	1/4 HP / 3P
Servo Motor	400W / 3P





2 STAGES AUTO FINGER ASSEMBLE PRESS

Description	F-A05 - For FL12A F-A08 - For FL12AF 4.5M	F-A05 - For FL12A F-A08 - For FL12AF 6M
Working Size		
length	4500 mm	6000 mm
width	30~150mm	
thickness	20~75mm	
Finger assembly pressure	0-150kg/cm2	
Feeding speed	80m/min	
Capacity 6m length product	3~4PCS	
Capacity 4.5m length product	3-4 PCS	
Hydraulic power unit	5HP	
POWER REQUIRED		
Feed Conveyor motor	3P / 2HP x 1	
Feed wheels motor	3P / 3HP x 1	
Hydraulic Power Unit	3P / 5HP x 1	
Cut-off Saw motor	3P / 5HP x 1	
	with Saw Blade	
Dusthood outlet Dia / Air Volume	6"x4 & 4"x1 / 8500 CMH	
Machine dimension(LxWxH)	8770x1380x1350mm	10290x1380x1350mm
Packing dimension(LxWxH)	5800x1480x1460mm	7300x1480x1460mm
Packing dimension(LxWxH)	3270x630x1180mm	3270x630x1180mm
Container	40"x1 + 20"x1	
Voltage	415V/50C/3P	

STANDARD ACCESSORIES

- Trimming sawblade 2 pcs.
- Hocking sawblade 2 pcs.
- Scoring sawblade 3 pcs.
- Cutter presetter 1 set.

OPTIONAL EQUIPMENT

- Shaper cutter grinder

Shapers & Press are Controlled by Touchscreen (HMI)

Features

1. Two big and long infeed wheels to move the material in to the press unit.
2. When the press is cutting the material, it has to have two holders holding the material while cutting and the holder has to be wood and connect with cylinder.
3. It has 4 length dividing devices that allow the press to cut up to 4 same or different lengths. The device has to have two sensors.

Air Consumption: 240 L/MIN